

**Manuale di Istruzioni
Instruction Manual
Gebrauchs Anweisungen
Mode d'Emploi
Manual de Manejo**



Minibox EMC



carlo de giorgi s.r.l.

Via Tonale, 1 – 20021 Baranzate (MI) – Italy
Tel. +39.02.356.15.43 r.a. – Fax +39.02.356.18.08

Dati modello
Model data / Donnés du modèle / Modelldaten / Datos del modelo

Tipo Model Modèle Modell Modelo	Alimentazione Power supply Alimentation Betriebs-spannung Alimentación	Anno di costruzione Year of manufacture Année de fabrication Baujahr Año de fabricación
661/00	230 V 50 Hz	<input type="checkbox"/> 2016 <input type="checkbox"/> 2017 <input type="checkbox"/> 2018 <input type="checkbox"/> 2019 <input type="checkbox"/> 2020



carlo de giorgi s.r.l.

CE DECLARATION OF CONFORMITY

The undersigned:

CARLO DE GIORGI S.r.l.
Via Tonale, 1
20021 BARANZATE (MI) - I

declares, under its own responsibility, that the device:

Type: **MINIBOX EMC**

described as:

Portable dust aspirator, specifically designed for bench finishing for metals, ceramics and resins,

conforms to the Laws implementing the requirements of the "Low Voltage Directive" 2014/35/UE, the "Electromagnetic Compatibility" Directive 2014/30/UE and the RoHS Directive 2011/65/UE, in accordance with the applicable technical standards EN ISO 12100, EN 61010-1, EN 61029-1, EN 61029-2-4, EN 60326-1, EN 55014-1, EN 55014-2.

Date: 01/10/2016

Signed: De Giorgi Ariberto

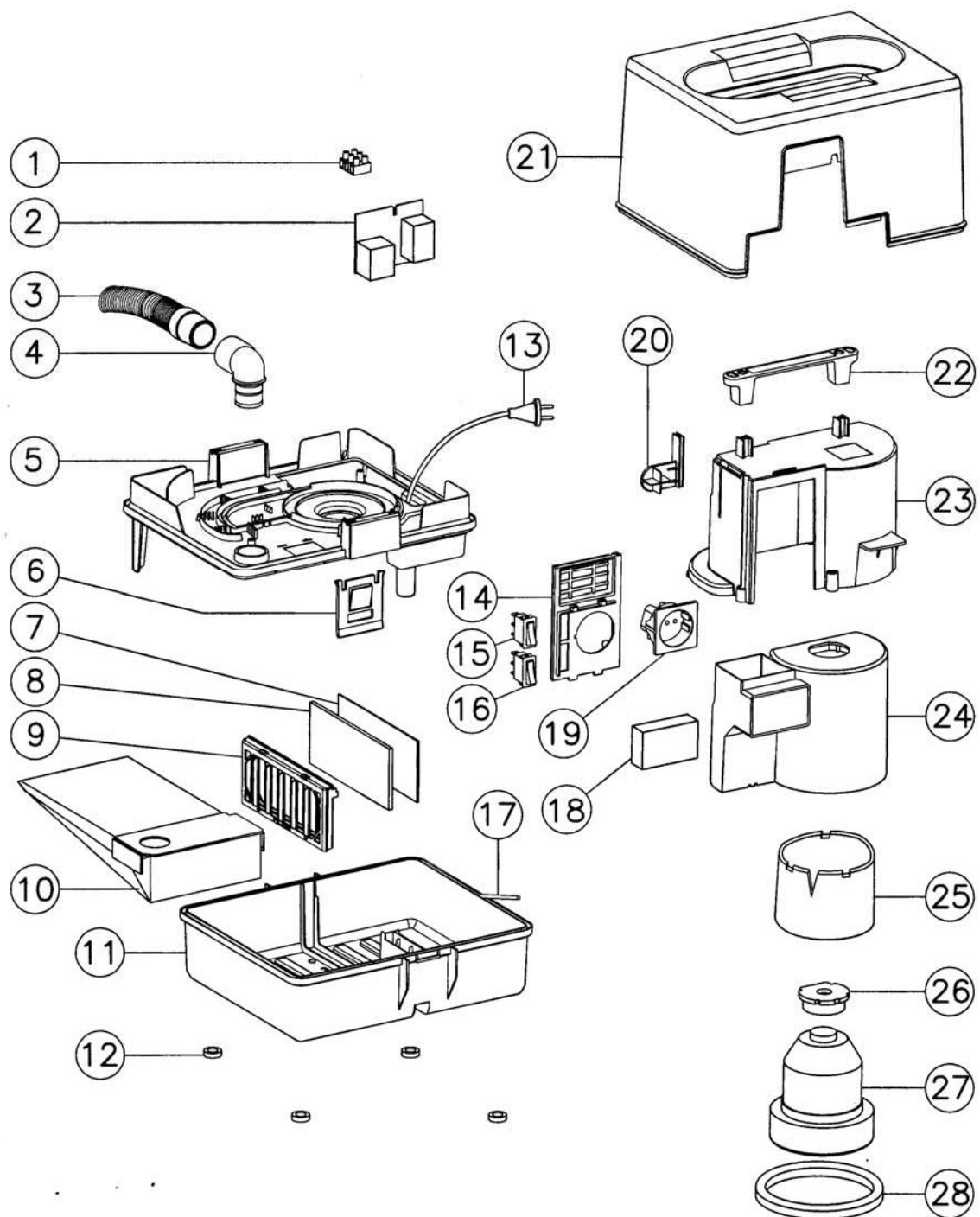
CEO


Person authorized to compile the technical file:

Ariberto De Giorgi
Presso Carlo De Giorgi S.r.l.
Via Tonale 1
20021, Baranzate, Milano, Italy

MINIBOX EMC

ESPLOSO / EXPLODED VIEW



Instruction Manual



Minibox EMC



carlo de giorgi s.r.l.

CONGRATULATIONS FOR YOUR CHOICE!!

Choosing this apparatus you have purchased a particularly reliable unit that will facilitate your work.

This unit complies with the directives 89/392/CE, therefore CE mark is admitted:



IMPORTANT!

Before installing the apparatus read carefully this manual and keep it for future consultations.

WARNING

Do follow carefully all the indications brought back in this manual. During all the maintenance operations disconnect the power cord from the electrical outlet, and/or disconnect the compressed air and/or the water attack and/or other attacks of external parts to the apparatus. Do not introduce stranger objects inside the unit during the maintenance operations. Use only the accessories in equipment for the filling operations and/or maintenance. Do not execute different operations of maintenance from those brought back in the manual. Whichever operation not contemplated in this manual, can involve risks. For operations of this type, contact the technical service. Before turning on the unit and connecting the power cord to the electrical outlet, make sure that the voltage corresponds to the one brought back on the fabrication nameplate placed on the back part of the apparatus.

CAUTION:

- **Do not make any maintenance operation when the power cord is connected: FULGURATION DANGER!!!**
- **Use only genuine spare parts. Placing not genuine spare parts can void your warranty, moreover can make the apparatus not in compliance with the norms, and dangerous when in use.**

For whichever inherent information concerning installation, maintenance and use of the unit, contact the customers' service

MINIBOX EMC – FINISHING SUCTION UNIT

UNPACK

Verify integrity of the pack at the moment of the reception of the apparatus. Verify on the back side the yellow adhesive nameplate **QUALITY CONTROL PASSED** the control code is integral. Verify that in the packaging all the parts and the supplied accessories of series are contained together with the apparatus: power cord, suction hose and connection, pack of filters MINIBAG, user's documentation and warranty.

INSTALLATION

Take the suction unit out of the packaging and place it where can be easily inspected for the replacement of the recovery filter of powders MINIBAG (rif. 10) and for the periodic substitution of the filter for motor protection (rif. 7-8-9). **ATTENTION: do not place the apparatus inside a piece of furniture without circulation of air.**

Connect the power cord (ref. 13) to a power outlet (absorption max 1.500 W). **ATTENTION:** make sure that the voltage corresponds to the one brought back on the fabrication nameplate placed on the apparatus.

Connect the micromotor's plug to the Minibox EMC (ref.19) – **ATTENTION MAX MICROMOTOR POWER 1.200 WATT**

Connect one side of the suction hose (ref. 3) where you need to have the aspiration: (AIRBASE 662/00 – SUCKY 658/00 – MICROBOX 663/00), or to your bench.



After these operations, the suction unit is now ready to work: turn on the apparatus by pressing the general switch (ref. 16) and regulate the aspiration power acting on the power regulator (ref. 15) min 300 W - max 600 W.

ATTENTION: the MINIBAG filter (rif. 10) has a very important function for the perfect operating of the apparatus and for your health. Check it periodically and replace it before it is completely full. Do not use the same filter more than one time, and do not discharge it. Non-observance will void your warranty. Once exhausted the filter close it with a proper adhesive tape and waste appropriately in compliance with your country rules.

MAINTENANCE

Substitution of the used filter of powders:

Control the bag of used powders every 4/5 days and replace it before completely full (max to approximately 2/3 of its capacity). Do not re-use and do not empty out the used filters. When the filter is exhausted close it with a proper adhesive tape and waste appropriately in compliance with your country rules.

Substitution of the motor protection filter:

Check every two weeks the motor protection filter and clean it by blowing compressed air in the same way of passage of the sucked air. The filter must be replaced with a new one at least every 4 months. This preserves the motor and the perfect operating of the apparatus.

GUIDE TO COMMON QUESTIONS

The apparatus is not turning on:

1. Control that the power cord plug (rif. 13) is properly connected to the electrical outlet.

The suction power is low:

1. Replace the recovery dust filter (rif.10), and/or replace the motor protection filter (rif.7-8-9).

Carried out these controls, in case the apparatus still presents disadvantages, contact the customers' technical service.

SPECIFICATIONS

Operating voltage V/Hz 230/50-60 (see nameplate on the apparatus)

Weight Kg. 3,5

DIMENSIONS

Height cm. 25 Width cm. 29 Depth cm. 25